

# MMA-020624 2000-6000 MHz Fully Matched High Dynamic Range Amplifier

## Features:

- Ideal for 2000 – 6000 MHz High Linearity / High Dynamic Range Applications
- Excellent RF Performance:
  - 40 dBm OIP3
  - 25 dBm P1dB
  - 18 dBm Pout @ 2.0% EVM (Testing signal: 802.16/64 QAM)
  - 17 dB Gain @ 2000-4000 MHz
  - 13 dB Gain @ 4000-6000 MHz
- Single +8V Supply
- MTTF > 100 years @ 85°C ambient temperature

## Description:

The MMA-020624 is a high linearity GaAs FET broadband MMIC die amplifier utilizing MWT's proprietary linear device technology. Applications include the driver amplifiers in 3G cellular and WiMax/WLAN infrastructure base stations and access points. The third order intercept performance of the MMA-020624 is excellent, typically 15 dB above the 1 dB gain compression point.

## Typical RF Performance: *Vds=8.0V, Ids=250mA, Ta=25 °C Z0=50 ohm*

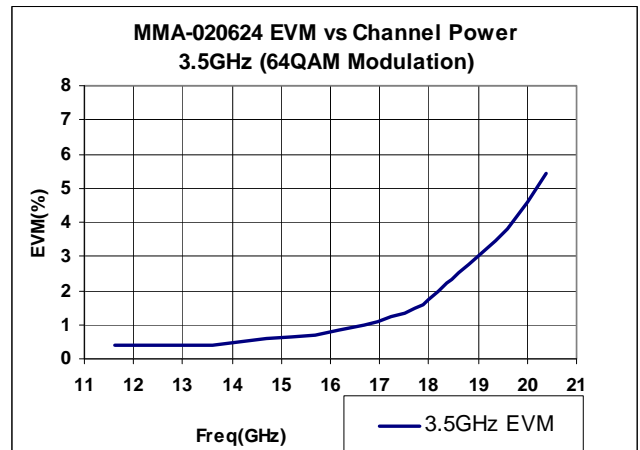
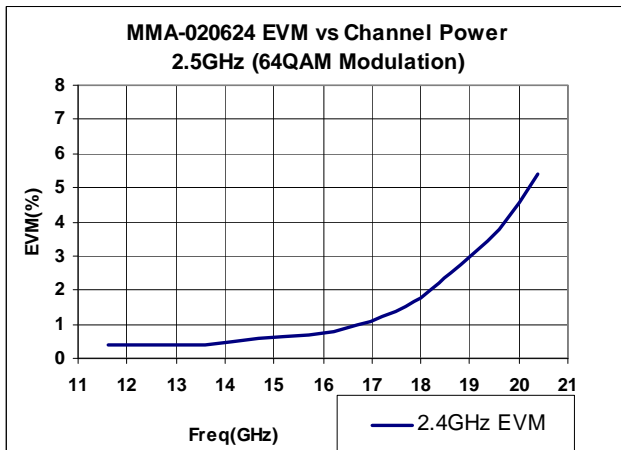
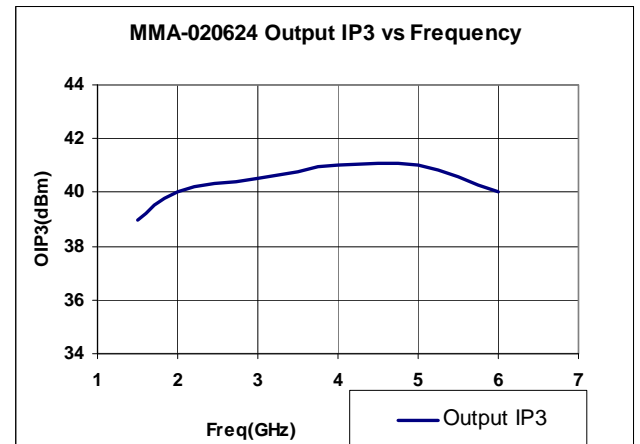
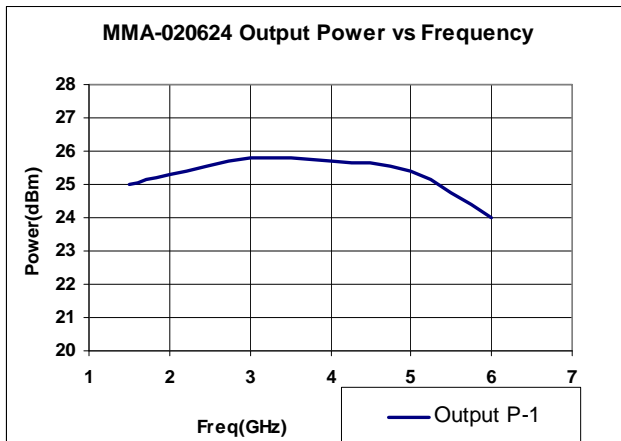
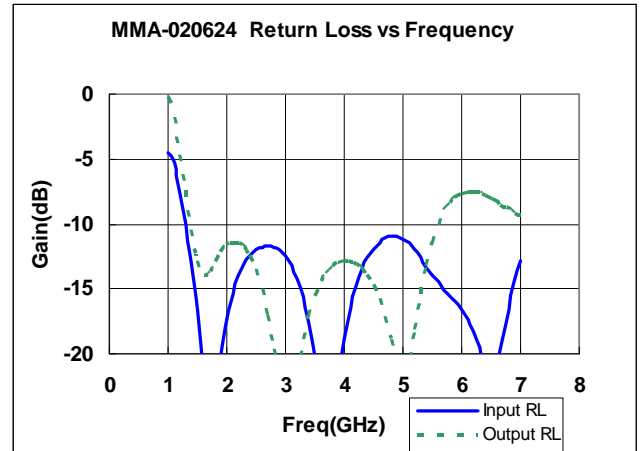
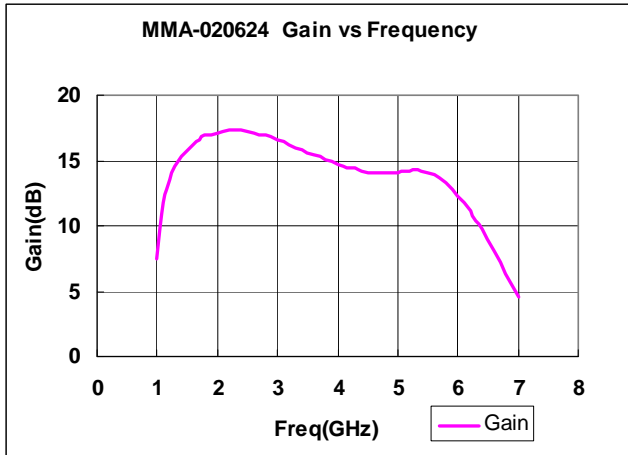
Parameter	Units	Typical Data	
Frequency Range	MHz	2000-4000	4000-6000
Gain (Typ / Min)	dB	17 / 15	13 / 11.5
Gain Flatness (Typ / Max)	+/-dB	1.0 / 1.5	1.3 / 1.5
Input Return Loss	dB	12	12
Output Return Loss	dB	12	10
Output P1dB	dBm	25	24
Output IP3 <sup>(1)</sup>	dBm	40	40
Pout @ 2.0% EVM	dBm		18
Noise Figure	dB		3.5
Operating Current Range (Typ / Max)	mA	250 / 300	
Thermal Resistance	°C /W	30	

(1) Output IP3 is measured with two tones at output power of 13 dBm/tone separated by 10 MHz.

# MMA-020624

2000-6000 MHz Fully Matched High Dynamic Range Amplifier

## Typical RF Performance: $V_{ds}=8V, I_{ds}=250mA, Z_0=50\text{ ohm}, T_a=25\text{ }^\circ\text{C}$



### Absolute Maximum Ratings: ( $T_a = 25\text{ }^\circ\text{C}$ )\*

SYMBOL	PARAMETERS	UNITS	ABSOLUTE MAXIMUM
Vds	Drain-Source Voltage	V	9.0
Ids	Drain Current	mA	300.0
Pdiss	DC Power Dissipation	W	2.7
Pin max	RF Input	dBm	+24.0
Tope	Operating Temperature	$^\circ\text{C}$	-40 to +85
Tch	Channel Temperature	$^\circ\text{C}$	150.0
Tstg	Storage Temperature	$^\circ\text{C}$	-60.0 to 150.0

\*Operation of this device above any one of these parameters may cause permanent damage.

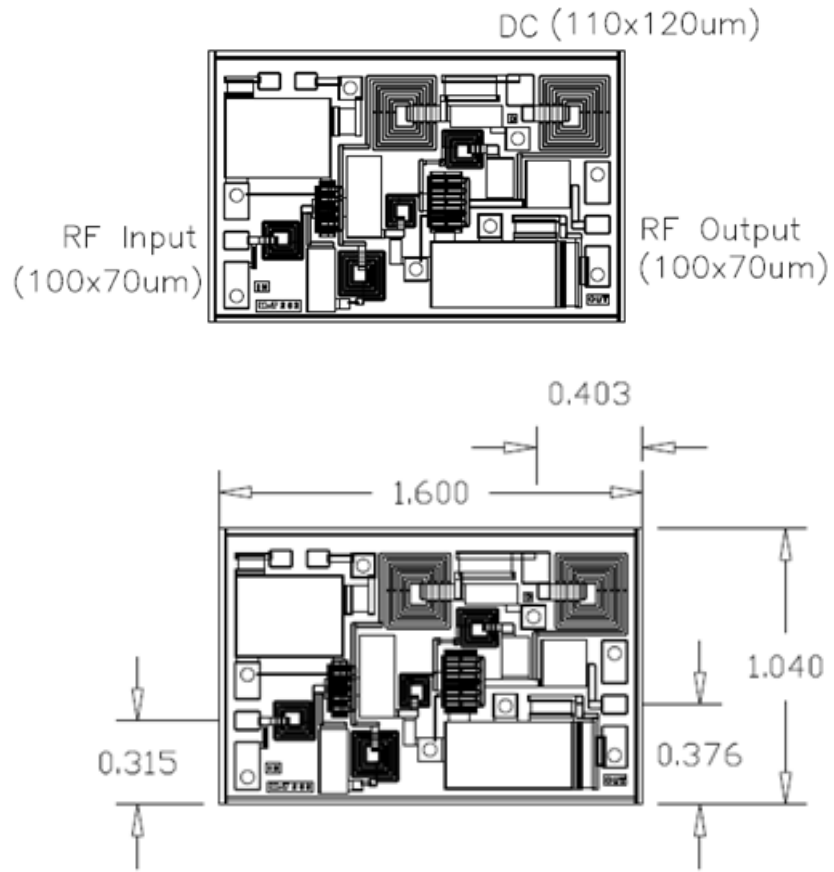
### Typical Scattering Parameters: $V_{ds}=8.0\text{V}$ , $I_{ds}=250\text{mA}$ , $Z_0=50\text{ ohm}$ , $T_a=25\text{ }^\circ\text{C}$

Freq (GHz)	S11		S21		S12		S22	
	Mag	Ang	Mag	Ang	Mag	Ang	Mag	Ang
2.0	0.842	17.6	0.775	39.5	0.0179	-40.5	0.747	-1.97
2.2	0.805	-13.8	0.918	14.7	0.0198	-68.5	0.654	-38.9
2.4	0.758	-45.4	1.07	-6.5	0.0216	-94.2	0.542	-78.8
2.6	0.675	-76.6	1.38	-26.2	0.0241	-117	0.384	-122
2.8	0.579	-105	2.04	-53.7	0.0303	-139	0.202	-176
3.0	0.483	-127	2.82	-91.9	0.0407	-168	0.0817	65.2
3.2	0.459	-145	3.39	-135	0.0506	154	0.179	-29.5
3.4	0.471	-169	3.61	-175	0.0567	116	0.248	-70.2
3.6	0.467	163	3.71	147	0.0596	79.4	0.286	-99.8
3.8	0.442	131	3.8	111	0.0619	43.7	0.319	-127
4.0	0.396	96.8	3.88	75.8	0.0633	8.36	0.345	-156
4.2	0.328	56.9	3.9	40.4	0.0659	-25.8	0.354	173
4.4	0.25	5.93	3.81	5.06	0.0694	-61.5	0.342	142
4.6	0.206	-66.2	3.76	-30.6	0.0719	-98.3	0.294	111
4.8	0.26	-144	3.6	-67.5	0.0683	-136	0.21	81.2
5.0	0.384	160	3.35	-105	0.0657	-173	0.114	53
5.2	0.499	114	2.98	-142	0.0628	152	0.0246	62.6
5.4	0.584	72.7	2.59	-177	0.0593	118	0.0718	140
5.6	0.646	33.8	2.22	150	0.0559	85.3	0.132	116
5.8	0.69	-3.61	1.89	118	0.0507	53.1	0.177	85.3
6.0	0.732	-39.7	1.61	85.3	0.0458	22.7	0.213	52.4

# MMA-020624

2000-6000 MHz Fully Matched High Dynamic Range Amplifier

## Outline Drawing:



UNIT: mm

# **MMA-020624**

2000-6000 MHz Fully Matched High Dynamic Range Amplifier

## **Contact Information**

For additional information please visit [www.cmlmicro.com](http://www.cmlmicro.com) or contact a sales office.

<b>Europe</b>	<b>America</b>	<b>Asia</b>
<ul style="list-style-type: none"><li>• Maldon, UK</li><li>• Tel +44 (0) 1621 875500</li><li>• <a href="mailto:sales@cmlmicro.com">sales@cmlmicro.com</a></li></ul>	<ul style="list-style-type: none"><li>• Winston-Salem, NC</li><li>• Tel +1 336 744 5050</li><li>• <a href="mailto:us.sales@cmlmicro.com">us.sales@cmlmicro.com</a></li></ul>	<ul style="list-style-type: none"><li>• Singapore</li><li>• Tel +65 6288129</li><li>• <a href="mailto:sg.sales@cmlmicro.com">sg.sales@cmlmicro.com</a></li></ul>

Although the information contained in this document is believed to be accurate, no responsibility is assumed by CML for its use. The product and product information is subject to change at any time without notice. CML has a policy of testing every product shipped using calibrated test equipment to ensure compliance with product specification.

© 2017 CML Microsystems Plc