

## EV9942/EV9942A/EV9942E

### Evaluation Kits for the CMX994/CMX994A/CMX994E

Three separate Evaluation Kits that allow the user to investigate all aspects of the CMX994 Direct Conversion Receiver IC family:

- **EV9942** targets the CMX994 - Standard and low power modes
- **EV9942A** targets the CMX994A - Standard and additional low power modes
- **EV9942E** targets the CMX994E - Enhanced, standard and low power modes

#### Features

- CMX994 Evaluation
- Receiver: LNA, I/Q Output, Selectable Filters
- Transmit LO Output
- CMX994 Integer-N PLL
- Interface for external Fractional-N PLL
- 19.2MHz VCTCXO
- Flexible External VCO
- On-board Voltage Regulators
- PC Control Interface Available
- 448MHz Default Operation
- 100MHz to 940MHz Evaluation

#### Applications

- For the Evaluation, Demonstration and Design-In of the CMX994 Direct Conversion Receiver IC

#### Supply Requirement

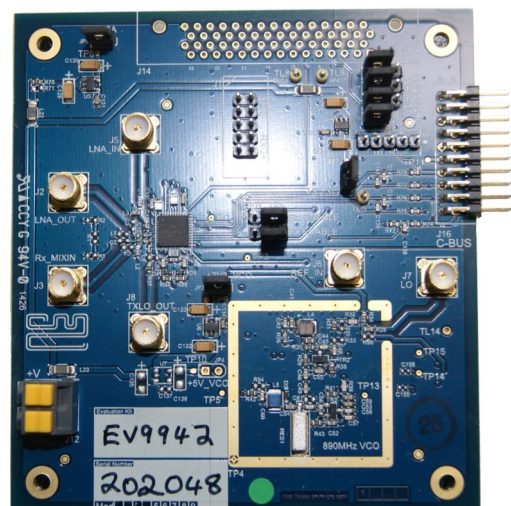
- 7.2 V (typ)

For further information, please refer to the 'Design Resources' section on the CMx9942/9942A/9942E product page at [cmlmicro.com](http://cmlmicro.com)

Each evaluation kit includes additional circuits to aid system performance evaluation, an internal VCO tank circuit, a Fractional-N PLL and a high-frequency VCO.

Access is provided to all CMX994 RF, baseband and control signals by connector or test points. Common test equipment connectors allow RF and baseband signal generators and spectrum analysers to be easily connected. Common interfaces allow rapid connection for evaluation of CML baseband processor IC Evaluation Kits, such as the PE0601 family and the PE0403 family using the PE0003 Universal Interface Card.

All signal paths are pre-matched by suitable components with pads for alternative, suggested matches. The RF frequency range of the Evaluation Kit is from 100MHz to 940MHz (1GHz for the A and E versions), with default operation centred at 448MHz.





## WHAT TO DO NEXT

Visit: [www.cmlmicro.com](http://www.cmlmicro.com)

Find: [Distributor](#)

## CML Microcircuits Benefits

### Faster time to market

Developing proven high performance and field tested ASSP ICs, CML is helping engineers to cope with increasing pressure in delivering shorter project design cycles.

### Design flexibility

CML's *FirmASIC*<sup>®</sup> reconfigurable technology with the use of a Function Image upload enables a single hardware platform to be used for multiple communications systems.

### High Quality

With 100% of products being tested before shipping, customers are assured of the highest reliability.

### Product Longevity

Designing with CML products, manufacturers are rewarded with longer product life cycles and a stable BOM, ensuring minimum engineering costs and maximum profit.

### Low Power

Being at the forefront of low power chip technology, manufacturers can develop smaller equipment with extended battery life.

### Superior Support

Internal and field based applications teams worldwide provide focused customer support to ease the development process.

[www.cmlmicro.com](http://www.cmlmicro.com)

United Kingdom  
United States  
Singapore

Tel: +44 (0) 1621 875500  
Tel: +1 336 744 5050  
Tel: +65 62888129

email: [sales@cmlmicro.com](mailto:sales@cmlmicro.com)  
email: [us.sales@cmlmicro.com](mailto:us.sales@cmlmicro.com)  
email: [sg.sales@cmlmicro.com](mailto:sg.sales@cmlmicro.com)